

2023 Bond Update



Stephen Dorman, P.E.
Vice-President, Sledge Engineering
Regular Board Meeting
January 15, 2025

2023 Bond Projects - Schedule Status as of 01/08/25

Large Capital Projects	Plan & Design	AHJ *	Bid	Construction	Open
Jarrell Ranch Middle School				71% Complete	Aug-25
New Operations Center				50% Complete	Aug-25
JHS Expansion - Package 1 <i>(Admin, Library, Fine Arts, Ag)</i>				25% Complete	Sep-25
Paw Prints & Admin Annex	Construction Documents In Progress (75% Complete)				Jun-26
Berry Creek Elementary School				28% Complete	Aug-26
JHS Expansion - Package 2 <i>(CTE & Gym)</i>	Construction Documents In Progress (80% Complete)				Aug-27
New Elementary School #5	Opening dated to be revised based on Demographer 2024 information				Aug-28
Safety/Security	<i>Timeline and Scope Varies for District-Wide and Campus Enhancements</i>				
Technology Infrastructure	<i>Timeline and Scope Varies for District-Wide and Campus Enhancements</i>				
New Buses & Other Vehicles	<i>Timeline Varies based on needs for each School Year</i>				

* AHJ=Authority Having Jurisdiction for Permit Review/Approval (City, Code, TCEQ, TDLR, Wilco Health)

Jarrell Ranch Middle School (MS#2)

Construction:

- a) Schedule tracking for Summer 2025
- b) Construction **71%** complete
- c) Paid To Date=**\$49.3 mil**(as of 12/31/24)



Offsite Coordination:

- a) TxDOT-Deceleration lane
(under construction)
- b) Sewer–Lift Station & Forcemain
(under construction)

Berry Creek Elementary School (ES#4)

Construction:

- a) Utilities in progress
- b) Concrete foundation continues
- c) Structural steel started
- d) Schedule tracking for June 2026 completion
- e) Construction **28%** complete
- f) Paid To Date = **\$9.8 mil**
(as of 11/30/24)



Operations Center

Construction

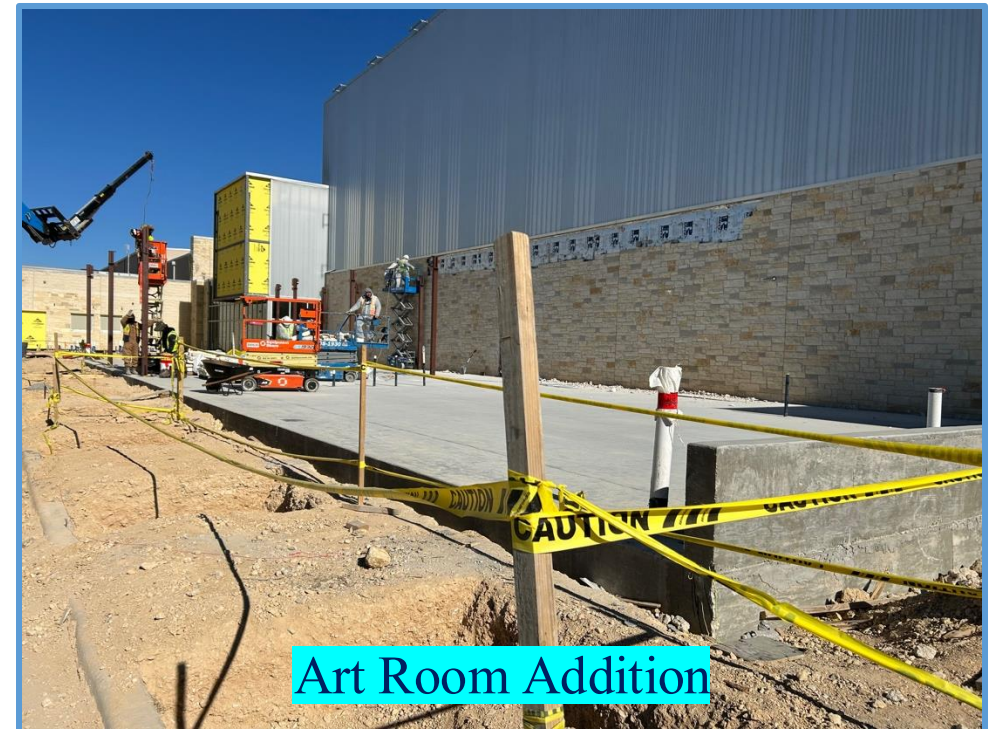
- a) Structural steel complete
- b) Interior build out continues
- c) Schedule tracking for Summer 2025
- d) Construction **50%** complete
- e) Paid To Date = **\$5.8 mil** (as of 11/30/24)



High School Expansion - Package 1

Construction:

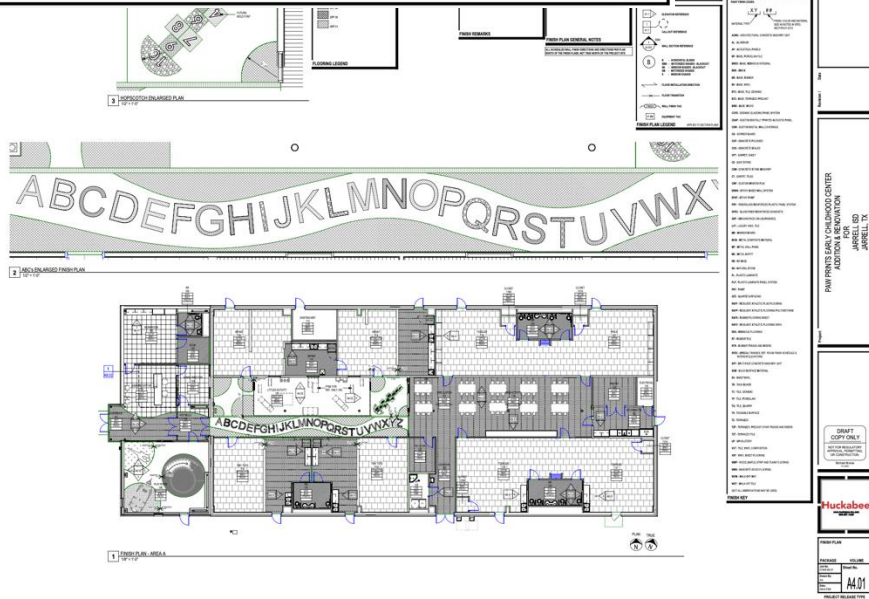
- a) Foundation piers underway
- b) Interior Library and Admin new framing underway
- c) Construction **25%** complete
- d) Paid To Date = **\$2.7 mil** (as of 11/30/24)



Admin Annex & Paw Prints

PAW PRINTS & ADMIN ANNEX RENOVATION FOR JARRELL ISD JARRELL, TX

Plans In Progress



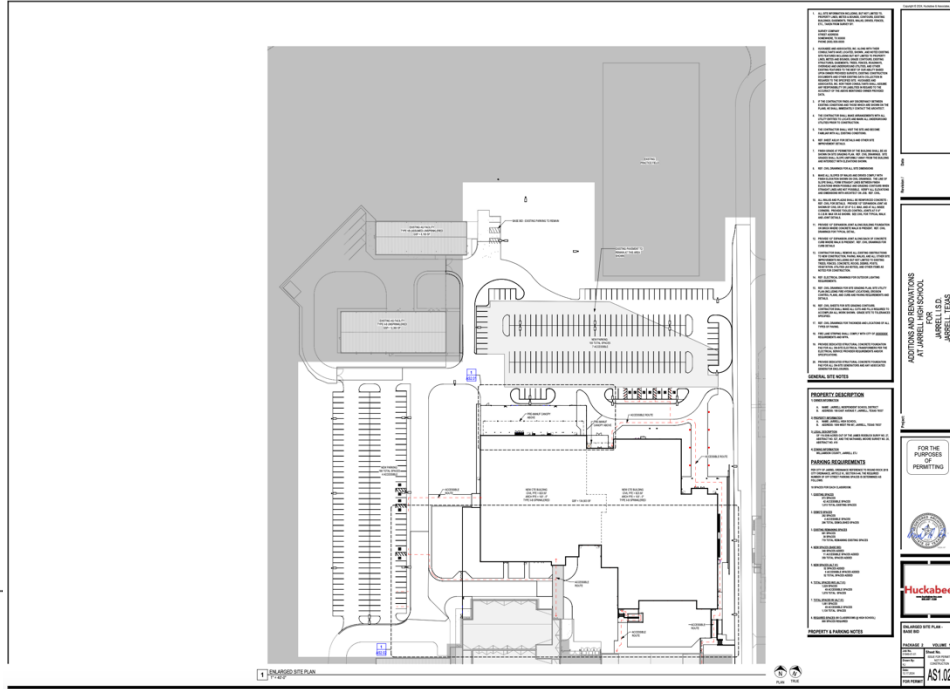
1. Scope

- a) Admin Annex – remodel “Tech Building”
- b) Paw Prints – remodel and expand old Admin Building

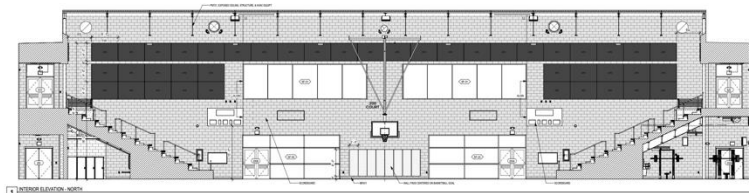
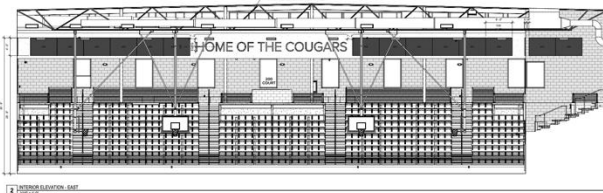
2. Design

- a) Schematic Design approved 9/18/24
- b) Design Development submitted 12/11/24
- c) **Construction Plans due 02/17/25**
- d) **Detailed Schedule being developed by Balfour-Beatty**

High School Expansion - **Package 2**



Plans In Progress



1. Design Status:

a) Package 2 – Scope:

- i. Career & Technical Education
- ii. Gym & Locker Rooms

b) Permit Set for review submitted to City on 12/17/24

c) Construction Plans due 03/05/25

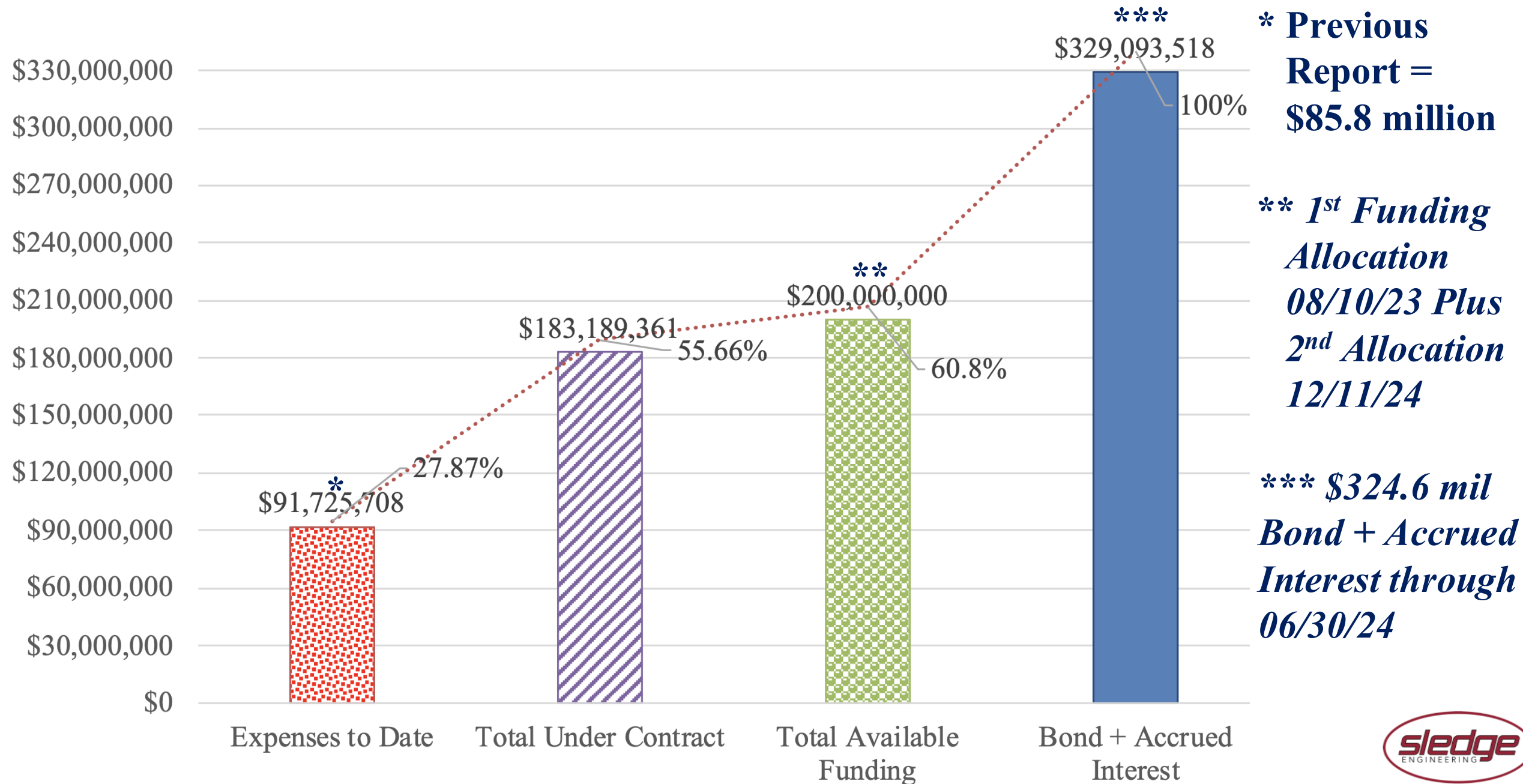
2. Bid/Construction:

a) Bid Process starts March 2025

b) Construction begins June 2025

c) Open **Aug 2027**

Project Accounting – Expense Summary as of 01/08/25



1916 Bell

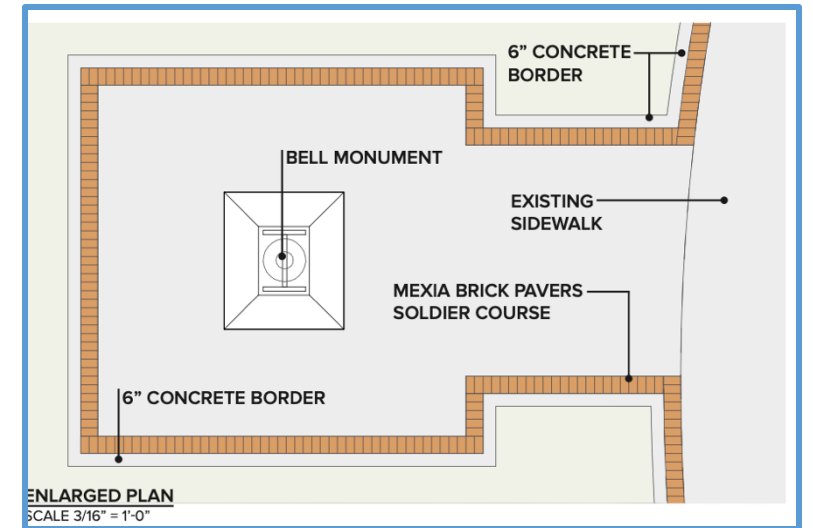
“Complete”

*(pending change of
1916 & 2024 inserts)*



Next Phase:

*Mexia Brick pavers with
engraving to be scheduled
with new parking lot*



ENLARGED PLAN
SCALE 3/16" = 1'-0"



Jarrell
Independent School District